

FALL 2011

LEARNING COMMUNITIES @ CSU



Cleveland State University
engaged learning[™]

CONTENTS

| | |
|---|------|
| Learning Communities at CSU | 3 |
| Why Join a Learning Community? | 4 |
| How to Join a Learning Community | 5 |
| Comments from Learning Communities Participants | 5 |
| Academic Support Systems for Learning Communities | 6 |
| Fall 2011 Learning Communities Descriptions and Schedules | 7-15 |
| 1. ACT: Acting, Creativity and Appreciation of the Arts | 7 |
| 2. A Blend of Writing and Science | 8 |
| 3. Complexities and Realities in U.S. Diversity | 9 |
| 4. Global Paradigms in Business | 10 |
| 5. Harmony and Science | 11 |
| 6. Metamorphosis: Black Culture in America | 12 |
| 7. Social Justice and Injustice in Global Societies | 13 |
| 8. Talking, Texting and Tweeting: The Evolution of Language and Culture | 14 |
| 9. Winning the Future: Agents of Positive Change | 15 |
| Undergraduate Research Experience | 16 |
| Important Study Skills for Learning Community Students | 17 |
| Orientation to Learning in Community | 18 |

Janika Garner, Administrative Assistant, Learning Communities Activities

Dr. Judith Shabaya, Director, Learning Communities Activities

Dr. Charleyse S. Pratt, Director, Learning Communities Programs and Partnerships

Charlea Watkins, Peer Mentor Coach and Student Photographer

Learning Communities at CSU

Learning Communities were introduced at Cleveland State University in 2007 through a Title III Grant with the goal of supporting first-year students in making a smooth transition from high school to University life. So far, the program has assisted more than 700 first-year students adjust to the university setting.

Students who enroll in Learning Communities benefit from a comprehensive system of supports that include strong academic advising, Peer Mentor Coaches, tutoring and other University services. Classes are taught by highly motivated and engaged faculty members who receive training in instructional enhancements to make classes more interesting and engaging.

Learning Communities are organized around a thematic cluster of courses and feature an integrated curriculum to stimulate intellectual, social and emotional growth. It is an interdisciplinary approach to teaching and learning that promotes academic achievement, inclusion in campus activities, and persistence to graduation. First-year students are quickly exposed to challenging learning situations that help develop critical thinking and analytical skills.

Participating in a CSU Learning Community is an ideal way for new students to be introduced to the rigor and responsibilities that a large University environment demands. In addition, students are able to make friends with others who share their interests, get involved and achieve.



**For more information,
visit csuohio.edu/learningcommunities/csu or call 216.687.5167**

Why Join a Learning Community?

Students report that their first-year experiences in a Learning Community provided structure and an organized, supportive way to begin University life. Instructors, staff and Peer Mentor Coaches assist students, helping them to get organized for success, manage time and resources, develop study skills, and navigate around this large urban campus.

Classes in the Learning Communities are small and arranged in clusters based on a theme of your choice. Smaller classes allow you to have more access to faculty and increase opportunities for active engagement with the course content. Professors provide learning experiences beyond the classroom walls through co-curricular activities such as guest presentations, special projects and visits to many of Cleveland's area landmarks. Many courses in Learning Communities satisfy General Education requirements as you are introduced to other subjects required for your major and graduation plans.



How to Join a Learning Community

Learning Communities are open to any first-year student. Select a Learning Community based upon your own interest and career objectives. Classes are designed and arranged to make scheduling easier. Feel free to call your Academic Advisor in advance of Orientation to save your spot in the Learning Community that best suits your needs. Let your advisor know that you wish to participate in a Learning Community. Your advisor will assist you with the enrollment process that places you in the community that is right for you.

Comments from Learning Communities Participants

Over the past four years, students who have participated in Learning Communities have benefited from the dynamic teaching and social network provided.

- *“I love my Learning Community. The classes are a nice, reasonable size, and I see the same people every week which makes me feel comfortable. Learning Communities help me make friends a lot easier so that if I need a study buddy, then I have an easy time finding one.”*
- *“Peer Mentor Coaches are helpful and the people in my Learning Community are awesome.”*
- *“I enjoyed the Learning Communities Orientation Day and thought it was a comfortable way to introduce the types of classes I would have and a great way to meet classmates and get academically prepared for school.”*
- *“Best decision! I recommend that everyone be in a Learning Community.”*



Academic Support Systems for Learning Communities

Each Learning Community has an assigned Peer Mentor Coach who is there to help by guiding students to college resource centers that they might need. The Peer Mentor Coach is trained to help facilitate your transition to University life. They will share ideas about how to navigate through campus with minimum stress.

Learning Community faculty members are committed to their work and students. They are there to serve you. Make sure to create an opportunity for one-on-one interaction with each of your professors. Learning Communities also have embedded librarians who help with class assignments that require research or any other topics of interest to you.

Learning Community staff are dedicated to see you succeed; turn to them when you need direction. They are familiar with the various resources on campus and will advise you where to go for your specific needs.



1. ACT: Acting, Creativity and Appreciation of the Arts

General Education Credits = 8

If the world is truly a stage, you will want to learn more about acting on the stage and in film. In this Learning Community, you will examine sophisticated concepts and methodologies associated with acting careers. Working with contemporary films, you will study vocal, physical, and psychological fundamentals of characterization for actors and productions. You may be surprised to learn about locations in the Greater Cleveland area that are often portrayed in stage and film works. Students in this Learning Community will become actively involved with research, writing, acting, and creating your own dramatic portrayals of life on the page, on the stage, in film and around the world.



Fall Courses

ASC 101 Introduction to University Life (1) *Introduction to University Life*

ENG 101 College Writing I (3) *Writing*

THE 225 Principles of Acting for Television, Film, and the Stage (4) *Elective*

UST 251 The African-American Image on Film (4) *Social Diversity (African-American)*

| | Monday | Tuesday | Wednesday | Thursday | Friday |
|---------------|--------|-----------------------|-----------|-----------------------|--------|
| 8:30 – 9:00 | | | | | |
| 9:00 – 9:30 | | | | | |
| 9:30 – 10:00 | | | | | |
| 10:00 – 10:30 | | | | | |
| 10:30 – 11:00 | | THE 225 | | THE 225 | |
| 11:00 – 11:30 | | 10:00 – 11:50 | | 10:00 – 11:50 | |
| 11:30 – 12:00 | | | | | |
| 12:00 – 12:30 | | | | | |
| 12:30 – 1:00 | | | | | |
| 1:00 – 1:30 | | | | | |
| 1:30 – 2:00 | | UST 251 | | UST 251 | |
| 2:00 – 2:30 | | 1:00 – 2:50 | | 1:00 – 2:50 | |
| 2:30 – 3:00 | | <i>Reserved seats</i> | | <i>Reserved seats</i> | |
| 3:00 – 3:30 | | ASC 101 | | | |
| 3:30 – 4:00 | | 3:00 – 4:00 | | | |
| 4:00 – 4:30 | | | | | |
| 4:30 – 5:00 | | ENG 101 | | ENG 101 | |
| 5:00 – 5:30 | | 4:00 – 5:50 | | 4:00 – 5:50 | |
| 5:30 – 6:00 | | | | | |

2. A Blend of Writing and Science

General Education Credits= 8

This Learning Community offers students the opportunity to build a solid understanding of foundational concepts, tools and techniques, chemical bonds and reactions using applications to daily life. You will gain knowledge about important written records and documentation in science while you learn skills and strategies for keeping journals, lab notes, recording experiments and outcomes and synthesizing technical information. A creative component in this Learning Community encourages students to think outside of the box as they connect writing and science studies. Using the Common Reading text for this year, *The Immortal Life of Henrietta Lacks*, students will be able to see how writing and science can come together to yield an interesting and engaging learning experience.



Fall Courses

ASC 101 Introduction to University Life (1) *Introduction to University Life*

CHM 251 College Chemistry I (3) *Natural Science*

CHM 256 College Chemistry Laboratory I (1) *Natural Science Lab*

ENG 101 College Writing I (3) *Writing*

| | Monday | Tuesday | Wednesday | Thursday | Friday |
|---------------|--------------------------------------|---------|--------------------------------------|----------|--------------------------------------|
| 8:30 – 9:00 | | | | | |
| 9:00 – 9:30 | | | | | |
| 9:30 – 10:00 | | | | | |
| 10:00 – 10:30 | | | | | |
| 10:30 – 11:00 | | | | | |
| 11:00 – 11:30 | ASC 101 | | | | |
| 11:30 – 12:00 | 11:00 – 12:00 | | CHM 256 | | |
| 12:00 – 12:30 | | | 11:30 – 1:20 | | |
| 12:30 – 1:00 | | | | | |
| 1:00 – 1:30 | | | | | |
| 1:30 – 2:00 | CHM 251 | | CHM 251 | | CHM 251 |
| 2:00 – 2:30 | 1:30 – 2:20 <i>Reserved seats</i> | | 1:30 – 2:20 <i>Reserved seats</i> | | 1:30 – 2:20 <i>Reserved seats</i> |
| 2:30 – 3:00 | ENG 101 | | ENG 101 | | ENG 101 |
| 3:00 – 3:30 | 2:45 – 3:50 | | 2:45 – 3:50 | | 2:45 – 3:50 |
| 3:30 – 4:00 | | | | | |
| 4:00 – 4:30 | | | | | |
| 4:30 – 5:00 | | | | | |

3. Complexities and Realities in U.S. Diversity

General Education Credits= 12

Diversity has become a complicated social challenge. In this Learning Community, students will explore the complexities and the realities of diversity in the United States through the lenses of history, society and culture. Develop insight and understanding that will help you to recognize, examine and express your ideas and experiences. Course work in this community will inspire you to reflect on your own encounters with multiple dimensions of diversity, privilege and oppression, and provide you with an opportunity to process these issues on a personal level along with other students in the community.



Fall Courses

ANT 100 Human Diversity (4) *Social Diversity-U.S. Diversity*

ASC 101 Introduction to University Life (1) *Introduction to University Life*

ENG 101 College Writing I (3) *Writing*

MTH 116 Foundations of Quantitative Literacy (4) *Quantitative Literacy*

| | Monday | Tuesday | Wednesday | Thursday | Friday |
|---------------|--------|-----------------------|-----------|-----------------------|--------|
| 8:00 – 8:30 | | | | | |
| 8:30-9:00 | | ENG 101 | | ENG 101 | |
| 9:00-9:30 | | 8:00 – 9:50 | | 8:00 – 9:50 | |
| 9:30-10:00 | | | | | |
| 10:00-10:30 | | MTH 116 | | MTH 116 | |
| 10:30 – 11:00 | | 10:00 – 11:50 | | 10:00 – 11:50 | |
| 11:00 – 12:00 | | <i>Reserved seats</i> | | <i>Reserved seats</i> | |
| 12:00 – 1:00 | | | | | |
| 1:00 – 1:30 | | ANT 100 | | ANT 100 | |
| 1:30 – 2:00 | | 1:00 – 2:50 | | 1:00 – 2:50 | |
| 2:00 – 2:30 | | <i>Reserved seats</i> | | <i>Reserved seats</i> | |
| 2:30 – 3:00 | | | | | |
| 3:00 – 3:30 | | ASC 101 | | | |
| 3:30 – 4:00 | | 3:00 – 4:00 | | | |
| 4:00 – 4:30 | | | | | |

4. Global Paradigms in Business

General Education Credits = 7

The emergent global marketplace and e-Business models have stimulated changes in the way businesses operate and the way we operate in business environments. These changes demand new thinking about theories and applications of theories for success and sustainability. In this Learning Community, you will study how successful businesses have engaged with local interests, global markets and technology for greater profits and business success. Examine the relationships between companies, inventors and entrepreneurs. Course work and projects will allow you to study the structure of business enterprises, entrepreneurship, innovation and the creation of capital, and strategies in successful organizations. You will enjoy immediate networking opportunities with prominent business individuals and organizations through innovative classroom and co-curricular activities.



Fall Courses

BUS 151 World of Business (3) *Elective*

ENG 101 College Writing I (3) *Writing*

MTH 148 Mathematics for Business Majors I (4) *Quantitative Literacy*

| | Monday | Tuesday | Wednesday | Thursday | Friday |
|---------------|--------|--|-----------|--|--------|
| 8:00 – 8:30 | | | | | |
| 8:30-9:00 | | MTH 148 8:00 – 9:50 <i>Reserved seats</i> | | MTH 148 8:00 – 9:50 <i>Reserved seats</i> | |
| 9:00-9:30 | | | | | |
| 9:30-10:00 | | | | | |
| 10:00-10:30 | | ENG 101 10:00 – 11:50 | | ENG 101 10:00 – 11:50 | |
| 10:30 – 11:00 | | | | | |
| 11:00 – 12:00 | | | | | |
| 12:00 – 1:00 | | | | | |
| 1:00 – 1:30 | | | | | |
| 1:30 – 2:00 | | | | | |
| 2:00 – 2:30 | | | | | |
| 2:30 – 3:00 | | | | | |
| 3:00 – 3:30 | | BUS 151 2:30 – 3:45 | | BUS 151 2:30 – 3:45 | |
| 3:30 – 4:00 | | | | | |
| 4:00 – 4:30 | | | | | |

5. Harmony and Science

General Education Credits= 13

Chemistry and music share the common languages of mathematics and writing. This Learning Community is designed for enthusiastic, motivated and talented scholars who wish to explore and unravel perceptions of harmony, rhythm and literature. A dynamic, integrated curriculum provides the opportunity to gain a deeper understanding of historic and contemporary writings, including theories that guide our thinking about how things in our world come together to blend harmoniously or react in other ways.



Fall Courses

ASC 101 Introduction to University Life (1) *Introduction to University Life*

CHM 261 General Chemistry I (4) *Natural Science*

CHM 266 General Chemistry Laboratory I (1) *Natural Science Lab*

ENG 207 African American Literature (4) *Social Diversity-African American*

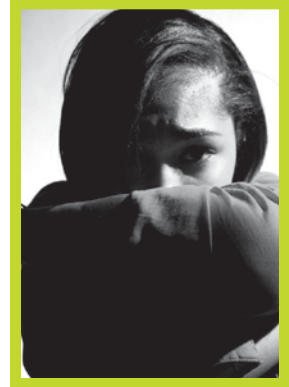
MUS 263 Black Music of Two Worlds (3) *Arts and Humanities*

| | Monday | Tuesday | Wednesday | Thursday | Friday |
|---------------|--|---------|--|-------------------------|--|
| 8:30-9:00 | CHM 261 8:30 – 9:35 <i>Reserved seats</i> | | CHM 261 8:30 – 9:35 <i>Reserved seats</i> | | CHM 261 8:30 – 9:35 <i>Reserved seats</i> |
| 9:00-9:30 | | | | CHM 266 9:00 – 11:50 | ENG 207 9:45 – 10:50 <i>Reserved seats</i> |
| 9:30-10:00 | ENG 207 9:45 – 10:50 <i>Reserved seats</i> | | ENG 207 9:45 – 10:50 <i>Reserved seats</i> | | |
| 10:00-10:30 | | | | | |
| 10:30 – 11:00 | | | | | |
| 11:00 – 11:30 | ASC 101 11:00 – 12:00 | | | | |
| 11:30 – 12:00 | | | | | |
| 12:00-12:30 | | | | | |
| 12:30 – 1:00 | | | | | |
| 1:00 – 1:30 | | | | | |
| 1:30 – 2:00 | MUS 263 1:30 – 2:20 | | MUS 263 1:30 – 2:20 | | MUS 263 1:30 – 2:20 |
| 2:00 – 2:30 | | | | | |
| 2:30 – 3:00 | | | | | |
| 3:00 – 3:30 | | | | | |
| 3:30 – 4:00 | | | | | |
| 4:00 – 4:30 | | | | | |
| 4:30 – 5:00 | | | | | |

6. Metamorphosis: Black Culture in America

General Education Credits= 8

Black culture in America has evolved into a distinct culture throughout history. In this Learning Community, you will gain a deeper understanding of the theoretical and applied foundations of black history in America as you study origins of the black culture from its beginnings to the current state. Integrated course work will allow you to examine the interplay between ethnicity, gender roles, socio-economic and other issues of diversity revealed in historical events. Various modes of instruction and interactive projects will be utilized to make the learning and history come alive.



Fall Courses

ASC 101 Introduction to University Life (1) *Introduction to University Life*

BST 200 Introduction to Black Studies (4) *Elective*

HIS 216 History of African-Americans Since 1877 (4) *Social Diversity-African American*

MUS 263 Black Music of Two Worlds (3) *Arts and Humanities*

| | Monday | Tuesday | Wednesday | Thursday | Friday |
|---------------|---------------------------------------|---------|---------------------------------------|----------|---------------------------------------|
| 8:00 – 8:30 | | | | | |
| 8:30 – 9:00 | | | | | |
| 9:00 – 9:30 | | | | | |
| 9:30 – 10:00 | BST 200 | | BST 200 | | BST 200 |
| 10:00 – 10:30 | 9:45 – 10:50 <i>Reserved Seats</i> | | 9:45 – 10:50 <i>Reserved Seats</i> | | 9:45 – 10:50 <i>Reserved Seats</i> |
| 10:30 – 11:00 | | | | | |
| 11:00 – 11:30 | ASC 101 | | | | |
| 11:30 – 12:00 | 11:00 – 12:00 | | | | |
| 12:00-12:30 | MUS 263 | | MUS 263 | | MUS 263 |
| 12:30 – 1:00 | 12:15 – 1:05 | | 12:15 – 1:05 | | 12:15 – 1:05 |
| 1:00 – 1:30 | | | | | |
| 1:30 – 2:00 | HIS 216 | | HIS 216 | | HIS 216 |
| 2:00 – 2:30 | 1:30 – 2:35 <i>Reserved Seats</i> | | 1:30 – 2:35 <i>Reserved Seats</i> | | 1:30 – 2:35 <i>Reserved Seats</i> |
| 2:30 – 3:00 | | | | | |
| 3:00 – 3:30 | | | | | |
| 3:30 – 4:00 | | | | | |
| 4:00 – 4:30 | | | | | |
| 4:30 – 5:00 | | | | | |
| 5:00 – 5:30 | | | | | |

7. Social Justice and Injustice in Global Societies

General Education Credits= 8

This experience provides a great opportunity to think about and evaluate various forms of social justice and injustice present in structures of significance, and consider the development of new policies that better meet human needs. Many of the world’s cultures and languages will be presented through lectures, demonstrations, videos and films as part of this Learning Community experience. Examine these cultural social issues and how they influence contemporary issues in the United States through the lenses of education and social policies. Special projects and activities will allow you to explore innovative strategies to make positive change in social, political, and economic systems.



Fall Courses

ANT 102 Study of Culture (4) *Social Diversity-U.S. Diversity*

ASC 101 Introduction to University Life (1) *Introduction to University Life*

EDB 200 Teaching as a Profession (2) *Elective (Optional)*

SWK 201 Contemporary Social Welfare (3) *Social Science*

| | Monday | Tuesday | Wednesday | Thursday | Friday |
|---------------|---|---------|---|----------|---|
| 8:00 – 8:30 | | | | | |
| 8:30 – 9:00 | | | | | |
| 9:00 – 9:30 | | | | | |
| 9:30 – 10:00 | | | | | |
| 10:00 – 10:30 | | | | | |
| 10:30 – 11:00 | | | | | |
| 11:00 – 11:30 | ANT 102 11:00 – 12:05 <i>Reserved Seats</i> | | ANT 102 11:00 – 12:05 <i>Reserved Seats</i> | | ANT 102 11:00 – 12:05 <i>Reserved Seats</i> |
| 11:30 – 12:00 | | | | | |
| 12:00-12:30 | | | | | |
| 12:30 – 1:00 | | | | | |
| 1:00 – 1:30 | | | | | |
| 1:30 – 2:00 | EDB 200 1:00 – 2:50 | | ASC 101 1:30 – 2:30 | | |
| 2:00 – 2:30 | | | | | |
| 2:30 – 3:00 | | | | | |
| 3:00 – 3:30 | | | | | |
| 3:30 – 4:00 | | | | | |
| 4:00 – 4:30 | SWK 201 4:00 – 5:15 <i>Reserved Seats</i> | | SWK 201 4:00 – 5:15 <i>Reserved Seats</i> | | |
| 4:30 – 5:00 | | | | | |
| 5:00 – 5:30 | | | | | |

8. Talking, Texting and Tweeting: The Evolution of Language and Culture
General Education Credits= 12

The use of texting and tweeting has changed the way PPL interact with each other. It is estimated that over 100 million users generate over 600 million tweets and texts each day. In this community U will examine language and communication in a broad range of disciplines such as linguistics, modern languages, ESL, communication, sociolinguistics, anthropology and the influence of modern communication strategies and tools. U will also scrutinize and discuss the dynamics in contemporary communication and how technological advancements and social media plays a role. U will be :-) to work with PPL with similar interests as yours since GMTA. The instructors are XLNT.



Fall Courses

- ANT 120** Introduction to Language and Linguistics (4) *Social Science*
- ASC 101** Introductions to University Life (1) *Introduction to University Life*
- ENG 101** College Writing I (3) *Writing*
- MTH 116** Foundations of Quantitative Literacy (4) *Quantitative Literacy*

| | Monday | Tuesday | Wednesday | Thursday | Friday |
|---------------|---|---------|---|----------|---|
| 8:00 – 8:30 | | | | | |
| 8:30 – 9:00 | MTH 116 8:30 – 9:35 <i>Reserved Seats</i> | | MTH 116 8:30 – 9:35 <i>Reserved Seats</i> | | MTH 116 8:30 – 9:35 <i>Reserved Seats</i> |
| 9:00 – 9:30 | | | | | |
| 9:30 – 10:00 | | | | | |
| 10:00 – 10:30 | ENG 101 9:45 – 10:50 | | ENG 101 9:45 – 10:50 | | ENG 101 9:45 – 10:50 |
| 10:30 – 11:00 | | | | | |
| 11:00 – 11:30 | ASC 101 11:00 – 12:00 | | | | |
| 11:30 – 12:00 | | | | | |
| 12:00-12:30 | | | | | |
| 12:30 – 1:00 | | | | | |
| 1:00 – 1:30 | | | | | |
| 1:30 – 2:00 | | | | | |
| 2:00 – 2:30 | ANT 120 1:30 – 2:35 <i>Reserved Seats</i> | | ANT 120 1:30 – 2:35 <i>Reserved Seats</i> | | ANT 120 1:30 – 2:35 <i>Reserved Seats</i> |
| 2:30 – 3:00 | | | | | |
| 3:00 – 3:30 | | | | | |
| 3:30 – 4:00 | | | | | |
| 4:00 – 4:30 | | | | | |
| 4:30 – 5:00 | | | | | |
| 5:00 – 5:30 | | | | | |

9. Winning the Future: Agents of Positive Change

General Education Credits= 7

This Learning Community provides a unique opportunity for “hands-on” learning, examining two noble professions, social work and teaching. An intensive, integrated curriculum and course work will involve a service learning component working and helping different members and agencies of the Greater Cleveland area community. This is a dynamic learning experience that will help you develop your own philosophy and innovative strategies, designed to improve the quality of knowledge and general life in our community and nation.



Fall Courses

- ASC 101** Introduction to University Life (1) *Introduction to University Life*
- EDB 200** Teaching as a Profession (2) *Elective (Optional)*
- SWK 200** Introduction to Social Work (3) *Social Science*
- SWK 255** Community Leadership Development (4) *Elective*

| | Monday | Tuesday | Wednesday | Thursday | Friday |
|---------------|------------------------|------------------------|-----------|------------------------|--------|
| 8:00 – 8:30 | | | | | |
| 8:30 – 9:00 | | | | | |
| 9:00 – 9:30 | | SWK 200 8:30 – 9:45 | | SWK 200 8:30 – 9:45 | |
| 9:30 – 10:00 | | <i>Reserved Seats</i> | | <i>Reserved Seats</i> | |
| 10:00 – 10:30 | | | | | |
| 10:30 – 11:00 | | | | | |
| 11:00 – 11:30 | | | | | |
| 11:30 – 12:00 | | | | | |
| 12:00-12:30 | | | | | |
| 12:30 – 1:00 | | | | | |
| 1:00 – 1:30 | | | | | |
| 1:30 – 2:00 | EDB 200 1:00 – 2:50 | SWK 255 1:00 – 2:50 | | SWK 255 1:00 – 2:50 | |
| 2:00 – 2:30 | | | | | |
| 2:30 – 3:00 | | | | | |
| 3:00 – 3:30 | | ASC 101 3:00 – 4:00 | | | |
| 3:30 – 4:00 | | | | | |
| 4:00 – 4:30 | | | | | |
| 4:30 – 5:00 | | | | | |
| 5:00 – 5:30 | | | | | |

Undergraduate Research Experience

Regardless of your major, this is a unique opportunity to engage with a Faculty Mentor who is conducting active, cutting-edge research. Students will enroll in the Creative Inquiry Experience course along with their other courses. Faculty Mentors will present and discuss research methodologies used in various disciplines, allowing the opportunity for intense discussion and deep learning about research methodologies. Build critical thinking and analytical skills, and practice writing and presenting research results as you develop your own faculty guided research proposal, with ideas for original research to present at the end of the semester.

Creative Inquiry Experience – Students in this Learning Community will enroll in one course identified by their College, designed to engage students in active, inquiry based learning, working hands-on with a Faculty Mentor.

Students will learn about current research and the methodologies being used in various disciplines and develop important research skills, including how to select and plan a research project, observation skills, data acquisition and analysis, writing and disseminating research results.

An exciting feature is the opportunity to work on your own original research, developing a faculty-guided proposal and concluding the semester with an informative presentation. Co-curricular activities include weekly interactions with a multi-disciplinary faculty Learning Community and assisting them with research activities. Director approval required.

For More Information

Contact Learning Communities at: learningcommunities@csuohio.edu



Important Study Skills for Learning Community Students

No student knows his subject: the most he knows is where and how to find out the things he does not know.
Woodrow T. Wilson (1856-1924), Twenty-eighth President of the USA

Study habits are essential to strong academic performance. Developing good study habits is an important discipline. Here are some simple tips that will help you make good use of your study time.

1. **Get plenty of rest.** If possible, get six to eight hours of sleep and eat breakfast.
2. **Create a good study environment.** Identify an area you find comfortable for studying and free from distractions, or you may prefer a quiet space in your residence hall or at home. Take an active approach and keep experimenting until you find just the right space and time.
3. **Understand your own learning style and make it work for you as you study.**
4. **Make flash cards** to use while studying. Writing them will help you to remember later.
5. **Find a study buddy**, someone who will help you to maintain your study routine and meet the goals you set for yourself.
6. **Organize a small study group** to review and study for exams. Your Peer Mentor Coach can help you to organize and coordinate these study plans.
7. **Find a place in the library** where you can study and go there sometimes to relax. Be sure to check the hours of operation.
8. **Ask for help if you need it.** Consult with the Instructor, SI or SLA Leader, Embedded Librarian or Peer Mentor Coach for your Learning Community for help on any assignments.



Orientation to Learning in Community

To best prepare you for a successful academic career at Cleveland State University, you are invited to participate in the *Orientation to Learning in Community* outdoor adventure on **Friday, August 26**. This is a great opportunity to meet and make new friends, exchange conversations with faculty, interact with librarians and create closer relationships with Learning Communities' staff who will assist you throughout the semester. The event is free and optional, but it is limited to 100 students, so you should register as soon as possible by calling **216-687-5167**.



Orientation to Learning in Community offers a comprehensive introduction to the experience of learning in a cohort community. Important strategies and skills that contribute to first-year success will be presented by representatives from Student Life and Learning Communities.

It is a full day of experiential learning outside the classroom as you participate in a variety of active and interactive team challenges, learn new skills and study strategies, critical thinking, collaboration and problem-solving.

You will also preview all the syllabi for your classes, including events and scheduled activities. Peer Mentor Coaches will be on hand to help you learn how to manage time, coordinate assignments and take full advantage of all University resources available to you. Below is a typical schedule for the Orientation Day.

- 8:00 AM: Students arrive at CSU Fenn Tower Residence Hall and gather outside
- 8:15 AM: A chartered bus will transport you to the Orientation site
- 9:00 AM: Orientation Activities begin and continue until 4:30 PM
- 11:45 AM: Lunch is provided
- 5:00 PM: Bus returns to CSU Fenn Tower Residence Hall

For more information about CSU Learning Communities,
contact 216-687-5167 or learningcommunities@csuohio.edu.



For more information about CSU Learning Communities,
call 216.687.5167
or email learningcommunities@csuohio.edu.

Cleveland State University
engagedlearning[™]

engagecsu.com